

HSF

NOTES:

- Rated Current: 5.0AMP. (20°C, 2*2P-2*15P) $\triangle A4$
- 3.0AMP. (20°C, 2*16P-2*40P) $\triangle A4$
- Contact Resistance: 20m Ω Max.
- Withstand Voltage: 1000V AC/DC
- Insulation Resistance: 1000M Ω Min.
- Operation Temperature: -40°C to +125°C (Gold Plating) $\triangle A4$
- 40°C to +105°C (Tin Plating) $\triangle A4$
- Contact Material: Copper Alloy
- Contact Plating: Au or Sn Over 30u" Min Ni $\triangle A4$
- Insulator Material: PA9T+G.F UL94V-0 BK $\triangle A4$

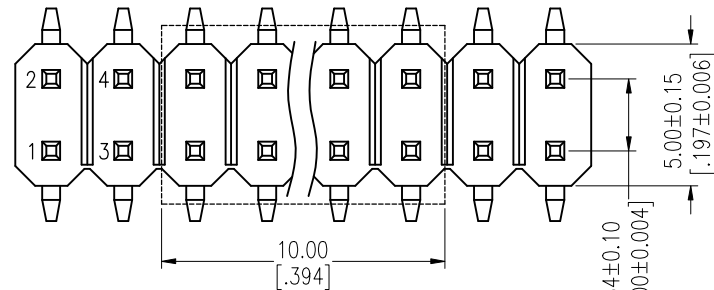
Ordering Information

1120- 1 2 XX XX M XXX C X XX $\triangle A2$

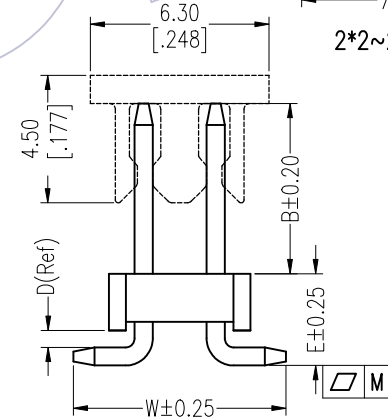
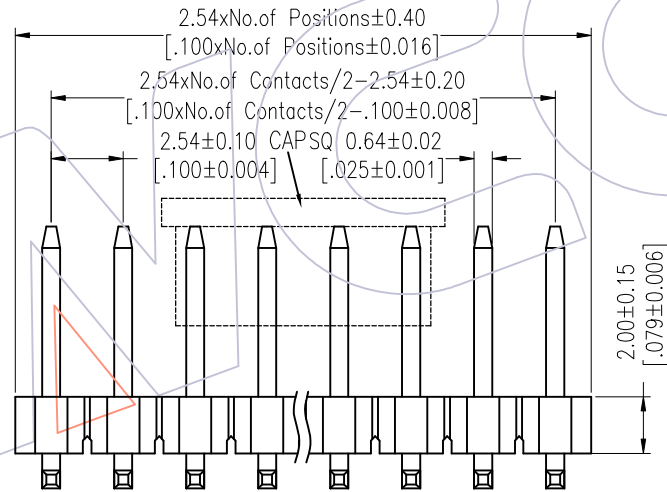
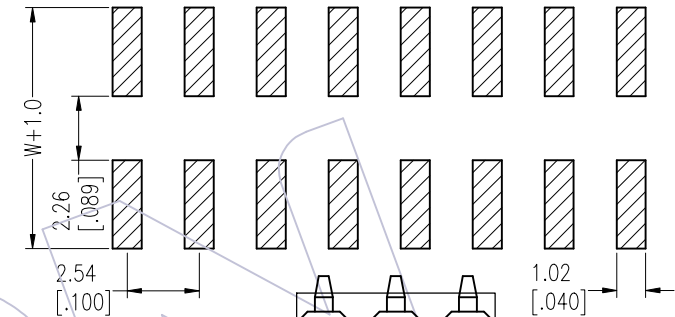
- Plastic Layer
- Plastic Row
- No. of Pins Per Row: 02-40
- Contact Plating: G0=Gold Flash, G3=10u"Au, BG3=8u"PdNi+2u"Au, G4=15u"Au, BG4=13u"PdNi+2u"Au, G5=30u"Au, BG5=28u"PdNi+2u"Au, S0=Gold Flash/Tin, S3=10u"Au/Sn, P3=8u"PdNi+2u"Au/Sn, S4=15u"Au/Sn, P4=13u"PdNi+2u"Au/Sn, S5=30u"Au/Sn, P5=28u"PdNi+2u"Au/Sn, SN=Bright Tin, SM=Matte Tin $\triangle A4$
- Insulator Material: C=PA9T
- Pin Length: L(See Table)
- Type: M:SMT
- Packing: T=Tube, P=Tube+CAP, R=Tube & Reel+CAP
- Series No. 01-99

Item	Pin Length	W	E	D	B	Mating
Standard	8.3	7.37	3.24	0.6	3.5	2135/2150T/2157
	8.8				4.0	2145/2150
	9.8				5.0	2168T/2171T
	10.8				5.84	2171/2185X
Alternate						

PIN(PerRow)	2-15P	16-25P	26-40P
M	0.10	0.15	0.20



Recommended P.C.B Layout (Top Side)
(PCB BOARD TOLERANCE ±0.05)
(PCB Thickness: T=1.60mm)



REV	DATE	MODIFICATION DESCRIPTION	CHANGE	OPERATION	DRAW	DATE	SCALE	Fit	PART NO.
A4	2025/03/03	Standardization Drawing	CP	OPERATION	DRAW	2025/03/03	SCALE	Fit	1120-12XXXXMXXXCRXX
A3	2023/02/03	Add Flatness	DuYng	x.X ±0.40	CP	2025/03/03	UNIT	mm	PH2.54 DUAL ROW SMT H=2.0
A2	2018/01/22	Modify P/N	Ruipeng	x.XX ±0.25	CHECK	2025/03/03	SIZE	A4	
A0	2012/05/07	NEW	William Chen	x.XXX ±0.15	TANG	2025/03/03	SHEET	1/4	
REV	DATE	MODIFICATION DESCRIPTION	CHANGE	Angle ± 3'	APPROVE	DATE	SHEET	1/4	Customer NO.
				DIM TOL	Steven Zhao	2025/03/03	PROJ.		



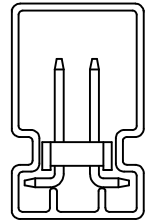
Http: www.wcon.com

<p>WCON-Dongguan Tel: +86 769 85358920 Fax: +86 769 85358915 E-mail: sales@wcon.com</p>	<p>WCON-Kunshan Tel: +86 512 57468408 Fax: +86 512 57468468 E-mail: salesks@wcon.com</p>
---	--

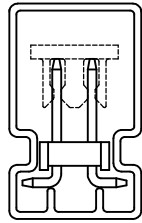
HSF

Packing:

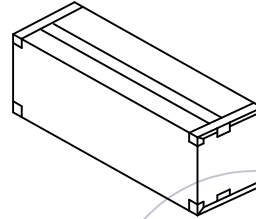
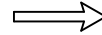
Tube:



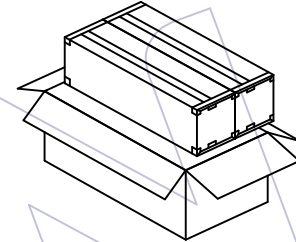
W/O CAP



W/T CAP



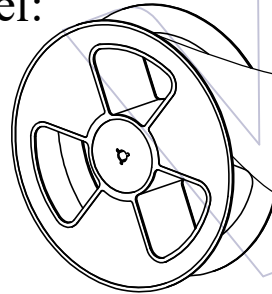
Inner Box



Box

Tube

Reel:

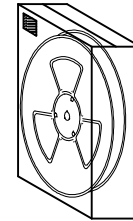
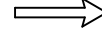
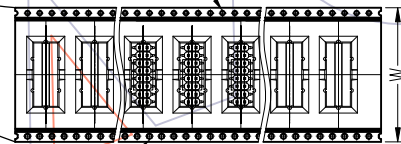


客户安装时拉出方向
Customer pull out direction

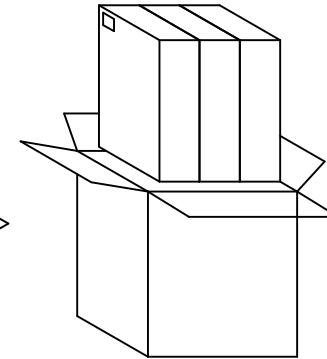
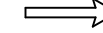


Round

Ellipse



Inner Box



Box (Put in 3 Inner Box)

A4	2025/03/03	Standardization Drawing	CP	OPERATION	DRAW	DATE	SCALE	Fit	PART NO.
A3	2023/02/03	Add Flatness	DuYing	x.x ±0.40	CP	2025/03/03	UNIT	mm	1120-12XXXXMXXCRXX
A2	2018/01/22	Modify P/N	Ruipeng	x.xx ±0.25	CHECK	DATE	SIZE	A4	TITLE:
A0	2012/05/07	NEW	William Chen	x.xxx ±0.15	TANG	2025/03/03	SHEET	2/4	PH2.54 DUAL ROW SMT H=2.0
REV	DATE	MODIFICATION DESCRIPTION	CHANGE	Angle ± 3'	APPROVE	DATE	PROJ.		Customer NO.
				DIM TOL	Steven Zhao	2025/03/03			

WCON

Http: www.wcon.com

WCON-Dongguan
Tel: +86 769 85358920
Fax: +86 769 85358915
E-mail: sales@wcon.com

WCON-Kunshan
Tel: +86 512 57468408
Fax: +86 512 57468468
E-mail: salesks@wcon.com

HSF

Packaging Quantity Refers To The Following Table

B=3.5

PINS	Q' ty/Tube	Q' ty/Inner Box	Q' ty/Box	PINS	Q' ty/Tube	Q' ty/Inner Box	Q' ty/Box
4	57	6,840	13,680	23	9	1,080	2,160
5	46	5,520	11,040	24	9	1,080	2,160
6	38	4,560	9,120	25	9	1,080	2,160
7	31	3,720	7,440	26	8	960	1,920
8	27	3,240	6,480	27	8	960	1,920
9	24	2,880	5,760	28	8	960	1,920
10	22	2,640	5,280	29	7	840	1,680
11	20	2,400	4,800	30	7	840	1,680
12	18	2,160	4,320	31	7	840	1,680
13	17	2,040	4,080	32	7	840	1,680
14	16	1,920	3,840	33	6	720	1,440
15	15	1,800	3,600	34	6	720	1,440
16	14	1,680	3,360	35	6	720	1,440
17	13	1,560	3,120	36	6	720	1,440
18	12	1,440	2,880	37	6	720	1,440
19	12	1,440	2,880	38	5	600	1,200
20	11	1,320	2,640	39	5	600	1,200
21	10	1,200	2,400	40	5	600	1,200
22	10	1,200	2,400				

PINS	W	Q' ty/Reel	Q' ty/Inner Box	Q' ty/Box
2	24	500	1,500	4,500
3	24	500	1,500	4,500
4	24	500	1,500	4,500
5	24	500	1,500	4,500
6	32	500	1,000	3,000
7	44	500	1,000	3,000
8	44	500	1,000	3,000
9	44	500	1,000	3,000
10	44	500	1,000	3,000
11	44	500	1,000	3,000
12	56	500	500	1,500
13	56	500	500	1,500
14	56	500	500	1,500
15	56	500	500	1,500
16	56	500	500	1,500
17	72	500	500	1,500
18	72	500	500	1,500
19	72	500	500	1,500
20	72	500	500	1,500
21	72	500	500	1,500
22	72	500	500	1,500
23	88	500	500	1,500
24	88	500	500	1,500
25	88	500	500	1,500
26	88	500	500	1,500
27	88	500	500	1,500

A4	2025/03/03	Standardization Drawing	CP	OPERATION	DRAW	DATE	SCALE	Fit	PART NO.
A3	2023/02/03	Add Flatness	DuYng	x.X ±0.40	CP	2025/03/03	UNIT	mm	1120-12XXXXMXXCRXX
A2	2018/01/22	Modify P/N	Ruipeng	x.xx ±0.25	CHECK	DATE	SIZE	A4	TITLE:
A0	2012/05/07	NEW	William Chen	x.xxx ±0.15	TANG	2025/03/03	SHEET	3/4	PH2. 54 DUAL ROW SMT H=2.0
REV	DATE	MODIFICATION DESCRIPTION	CHANGE	Angle ± 3'	APPROVE	DATE	PROJ.	⊕	Customer NO.
				DIM TOL	Steven Zhao	2025/03/03			

WCON
 Http: www.wcon.com
 WCON-Dongguan Tel: +86 769 85358920
 WCON-Kunshan Tel: +86 512 57468408
 Fax: +86 769 85358915 Fax: +86 512 57468468
 E-mail: sales@wcon.com E-mail: salesks@wcon.com

HSF

Packaging Quantity Refers To The Following Table

B=4.0

PINS	W	Q' ty/Reel	Q' ty/Inner Box	Q' ty/Box
2	24	460	1,380	4,140
3	24	460	1,380	4,140
4	24	460	1,380	4,140
5	32	460	920	2,760
6	32	460	920	2,760
7	44	460	920	2,760
8	44	460	920	2,760
9	44	460	920	2,760
10	44	460	920	2,760
11	44	460	920	2,760
12	56	460	460	1,380
13	56	460	460	1,380
14	56	460	460	1,380
15	56	460	460	1,380
16	56	460	460	1,380
17	72	460	460	1,380
18	72	460	460	1,380
19	72	460	460	1,380
20	72	460	460	1,380
21	72	460	460	1,380
22	72	460	460	1,380
23	88	460	460	1,380
24	88	460	460	1,380
25	88	460	460	1,380
26	88	460	460	1,380
27	88	460	460	1,380

B=5.0

PINS	W	Q' ty/Reel	Q' ty/Inner Box	Q' ty/Box
2	24	420	1,260	3,780
3	24	420	1,260	3,780
4	24	420	1,260	3,780
5	32	420	840	2,520
6	32	420	840	2,520
7	44	420	840	2,520
8	44	420	840	2,520
9	44	420	840	2,520
10	44	420	840	2,520
11	44	420	840	2,520
12	56	420	420	1,260
13	56	420	420	1,260
14	56	420	420	1,260
15	56	420	420	1,260
16	72	420	420	1,260
17	72	420	420	1,260
18	72	420	420	1,260
19	72	420	420	1,260
20	72	420	420	1,260
21	72	420	420	1,260
22	72	420	420	1,260
23	88	420	420	1,260
24	88	420	420	1,260
25	88	420	420	1,260
26	88	420	420	1,260
27	88	420	420	1,260

B=5.84

PINS	W	Q' ty/Reel	Q' ty/Inner Box	Q' ty/Box
2	24	300	900	2,700
3	24	300	900	2,700
4	24	300	900	2,700
5	32	300	600	2,700
6	44	300	600	1,800
7	44	300	600	1,800
8	44	300	600	1,800
9	44	300	600	1,800
10	44	300	600	1,800
11	56	300	300	900
12	56	300	300	900
13	56	300	300	900
14	56	300	300	900
15	72	300	300	900
16	72	300	300	900
17	72	300	300	900
18	72	300	300	900
19	72	300	300	900
20	72	300	300	900
21	72	300	300	900
22	88	300	300	900
23	88	300	300	900
24	88	300	300	900
25	88	300	300	900
26	88	300	300	900
27	88	300	300	900

A4	2025/03/03	Standardization Drawing	CP	OPERATION	DRAW	DATE	SCALE	Fit	PART NO.
A3	2023/02/03	Add Flatness	DuYing	x.X ±0.40	CP	2025/03/03	UNIT	mm	1120-12XXXXMXXCRXX
A2	2018/01/22	Modify P/N	Ruipeng	x.XX ±0.25	CHECK	DATE	SIZE	A4	TITLE:
A0	2012/05/07	NEW	William Chen	x.XXX ±0.15	TANG	2025/03/03	SHEET	4/4	PH2. 54 DUAL ROW SMT H=2.0
REV	DATE	MODIFICATION DESCRIPTION	CHANGE	Angle ± 3'	APPROVE	DATE	PROJ.	⊕	Customer NO.
				DIM TOL	Steven Zhao	2025/03/03			

WCON
 Http: www.wcon.com
 WCON-Dongguan Tel: +86 769 85358920
 WCON-Kunshan Tel: +86 512 57468408
 Fax: +86 769 85358915 Fax: +86 512 57468468
 E-mail: sales@wcon.com E-mail: salesks@wcon.com