

# HSF

- NOTES:
- 1.Voltage Rating: 250V AC/DC;
  - 2.Withstand Voltage: 1500V AC;
  - 3.Insulation Resistance: 100MΩ Min;
  - 4.Operating Temperature: -40°C to +125°C;
  - 5.Insulator Material: PBT,G.F,UL94V-O,BK;

Matching parts	
Housing	Wiring terminal
WD2500-2H02B001X	WD3500-TPXXSN01 WD3500-3TPXXS401 XX: 18~30Awg

## Ordering Information

WD2500-2 H XX X O XX X

2=Dual Row

H=HOUSING

No.of Pins of single row:

02=2P; 03=3P

04=4P; 05=5P

06=6P;08=8P;10=10PIN

Color:

B=Black; Y=Yellow;

W=NaturalL; R=Red

PACKING: PE Bag

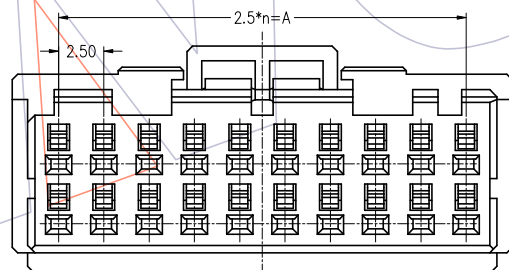
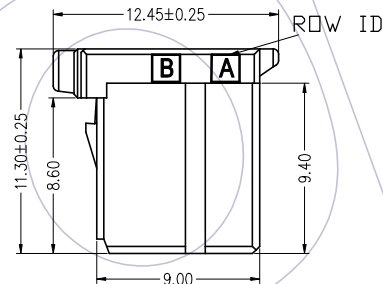
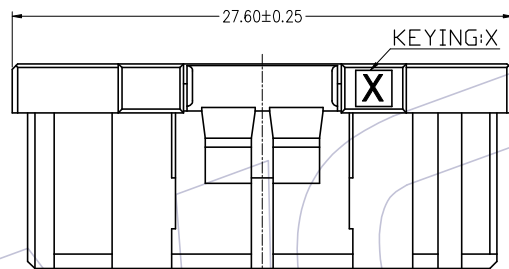
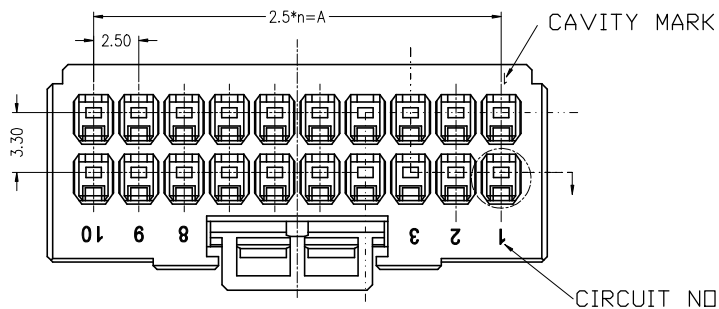
X Fool-proofing =01

X Fool-proofing =11

Y Fool-proofing =02

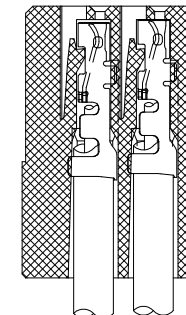
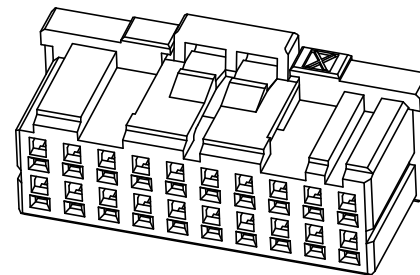
W: With logo

blank: without logo



20PIN,X-KEY

WD2500-2H10X001(W)	20	X	9	22.5	25.9	27.6	8.30
WD2500-2H10X002(W)	20	Y	9	22.5	25.9	27.6	8.30
WD2500-2H08X001(W)	16	X	7	17.5	20.9	22.6	8.30
WD2500-2H08X002(W)	16	Y	7	17.5	20.9	22.6	8.30
WD2500-2H06X001(W)	12	X	5	12.5	15.9	17.6	8.30
WD2500-2H06X011(W)	12	X	5	12.5	15.9	17.6	8.30
WD2500-2H06X002(W)	12	Y	5	12.5	15.9	17.6	8.30
WD2500-2H05X001(W)	10	X	4	10.0	13.4	15.1	3.30
WD2500-2H05X002(W)	10	Y	4	10.0	13.4	15.1	3.30
WD2500-2H04X001(W)	8	X	3	7.50	10.9	12.6	3.30
WD2500-2H04X002(W)	8	Y	3	7.50	10.9	12.6	3.30
WD2500-2H03X001(W)	6	X	2	5.00	8.40	10.1	3.30
WD2500-2H03X011(W)	6	X	2	5.00	8.40	10.1	3.30
WD2500-2H03X002(W)	6	Y	2	5.00	8.40	10.1	3.30
WD2500-2H02X001(W)	4	X	1	2.50	5.90	7.60	3.10
WD2500-2H02X011(W)	4	X	1	2.50	5.90	7.60	3.10
WD2500-2H02X002(W)	4	Y	1	2.50	5.90	7.60	3.10
Part NO	PIN	KEY	n	A	B	C	D



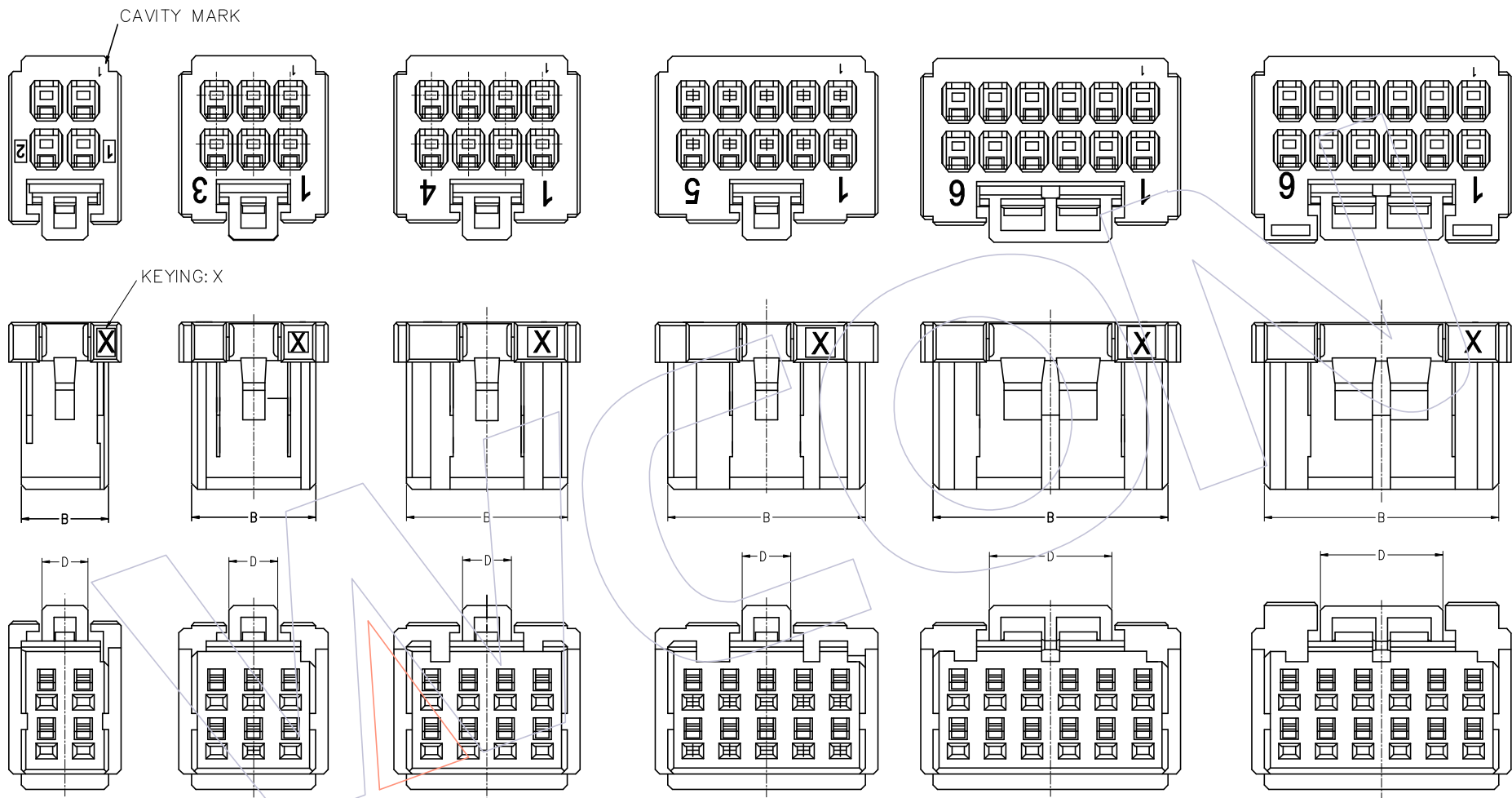
REV	DATE	MODIFICATION DESCRIPTION	CHANGE	OPERATION	DRAW	DATE	SCALE	FIT	PART NO.
A1	2023.08.19	Increase Y Keying	—	X.X	kevin-xin	2023.08.19	UNIT	mm	WD2500-2HXXX0XX(W)
A0	2023.08.02	Add the cable terminal material number	—	X.XX	CHECK	DATE	SIZE	A4	TITLE: 2.5X3.3 mm Dyn. TYPE Dual Row Socket Housing
1	2022.01.20	NEW	—	X.XXX	APPROVE	DATE	SHEET	1/5	Customer NO.
				Angle	± 3°		PROJ.		
				DIM	TOL				

# WCON

Http: www.wcon.com

WCON-Dongguan Tel: +86 769 85358920  
WCON-Kunshan Tel: +86 512 57468408  
Fax: +86 769 85358915  
E-mail: sales@wcon.com  
Fax: +86 512 57468468  
E-mail: salesks@wcon.com

# HSF



4PIN,X-KEY

6PIN,X-KEY

8PIN,X-KEY

10PIN,X-KEY

12PIN,X-KEY

12PIN,X-KEY  
WD2500-2H06X011(W)

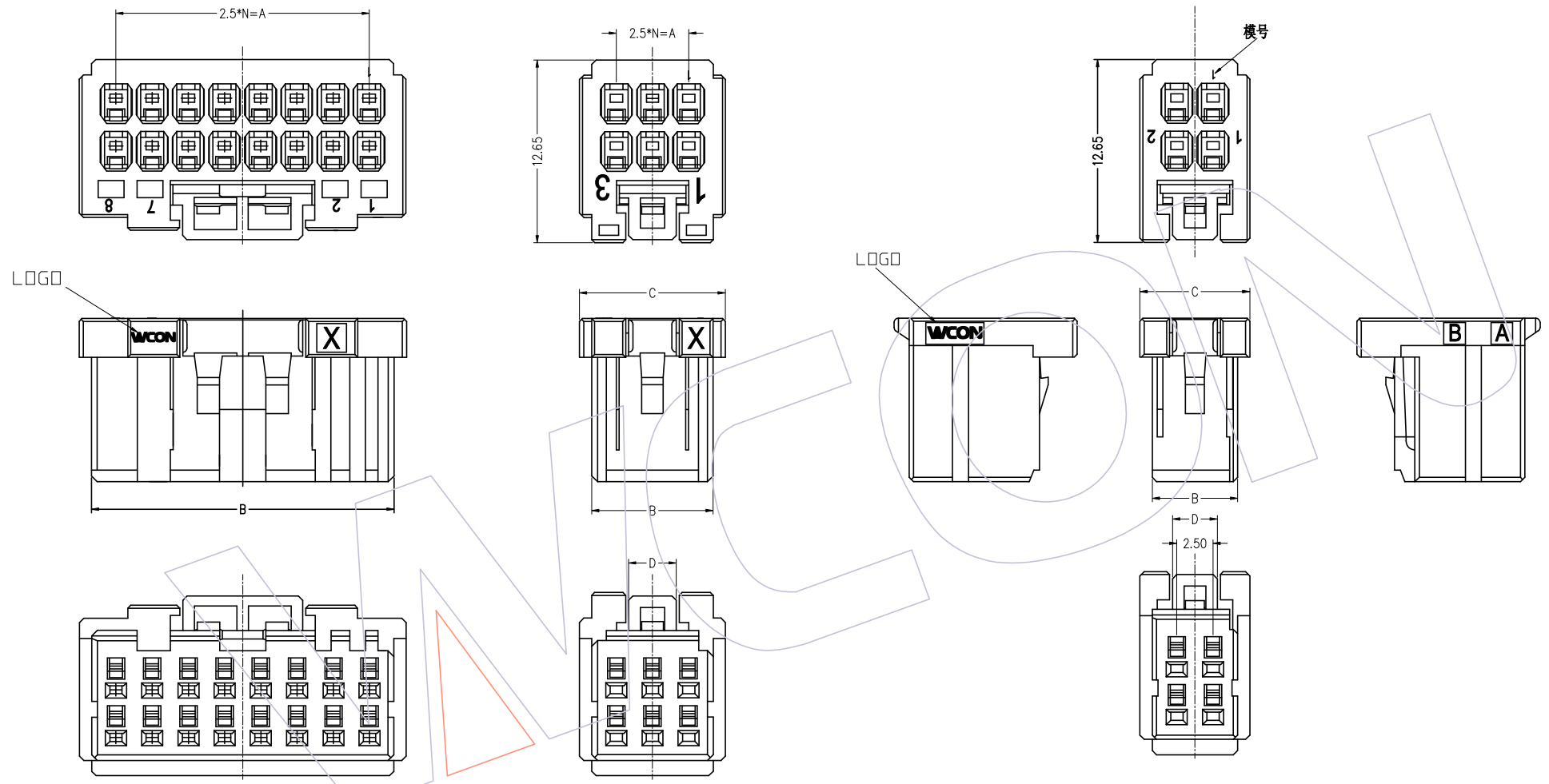
REV	DATE	MODIFICATION DESCRIPTION	CHANGE	OPERATION	DRAW	DATE	SCALE	FIT	PART NO.
A1	2023.08.19	Increase Y Keying	—	X.X	kevin-xin	2023.08.19	UNIT	mm	WD2500-2HXXX0XX(W)
A0	2023.08.02	Add the cable terminal material number	—	X.XX	CHECK	DATE	SIZE	A4	TITLE: 2.5X3.3mm Dyn. TYPE Dual Row Socket Housing
1	2022.1.20	NEW	—	X.XXX	APPROVE	DATE	SHEET	2/5	Customer NO.
				Angle DIM	± 3' TOL		PROJ.	⌀	



Http: [www.wcon.com](http://www.wcon.com)

WCON-Dongguan Tel: +86 769 85358920 Fax: +86 769 85358915 E-mail: <a href="mailto:sales@wcon.com">sales@wcon.com</a>	WCON-Kunshan Tel: +86 512 57468408 Fax: +86 512 57468468 E-mail: <a href="mailto:salesks@wcon.com">salesks@wcon.com</a>
---	--

# HSF



16PIN, X-KEY

6PIN, X-KEY  
WD2500-2H03X011(W)

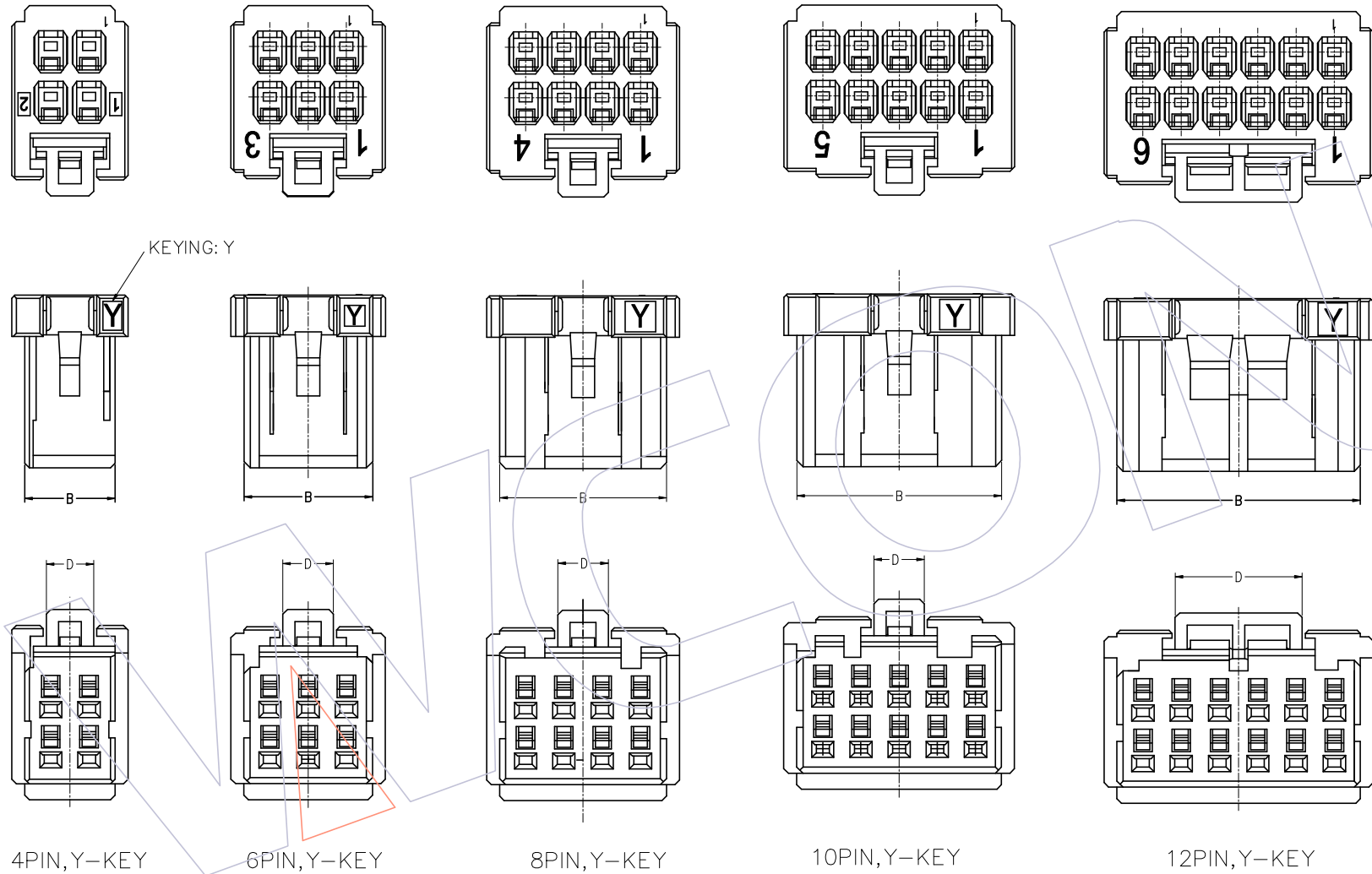
4PIN, X-KEY  
WD2500-2H02X011(W)

REV	DATE	MODIFICATION DESCRIPTION	CHANGE	OPERATION	DRAW	DATE	SCALE	FIT	PART NO.
A1	2023.08.19	Increase Y Keying	—	X.X ±0.40	kevin-xin	2023.08.19	UNIT	mm	WD2500-2HXXX0XX(W)
A0	2023.08.02	Add the cable terminal material number	—	X.XX ±0.25	CHECK	DATE	SIZE	A4	TITLE: 2.5X3.3mm Dyn. TYPE Dual Row Socket Housing
1	2022.1.20	NEW	—	X.XXX ±0.15	APPROVE	DATE	SHEET	3/5	Customer NO.
				Angle ± 3°			PROJ.	⌀	
				DIM TOL					

**WCON**  
Http: [www.wcon.com](http://www.wcon.com)

WCON-Dongguan Tel: +86 769 85358920 Fax: +86 769 85358915 E-mail: <a href="mailto:sales@wcon.com">sales@wcon.com</a>	WCON-Kunshan Tel: +86 512 57468408 Fax: +86 512 57468468 E-mail: <a href="mailto:salesks@wcon.com">salesks@wcon.com</a>
---	--

# HSF

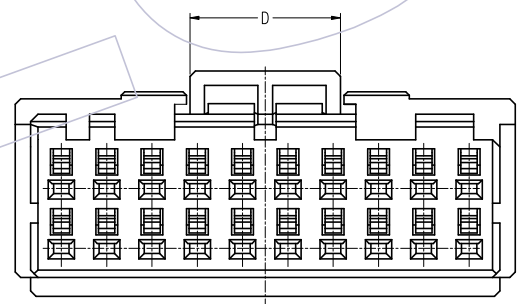
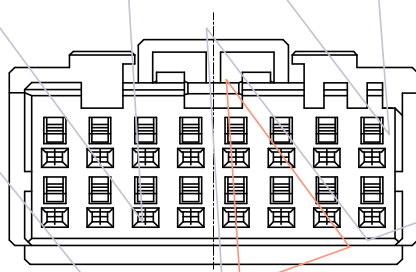
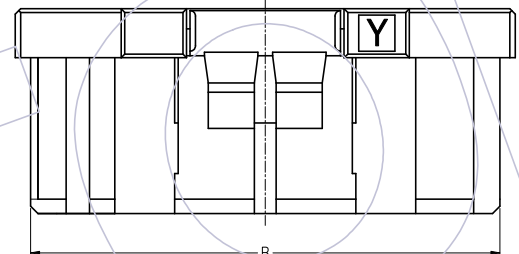
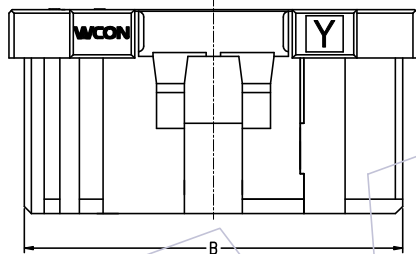
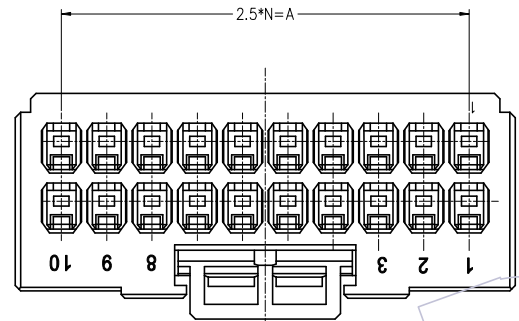
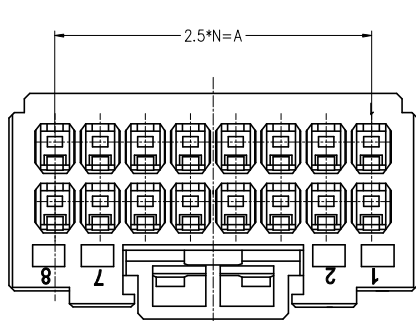


REV	DATE	MODIFICATION DESCRIPTION	CHANGE	OPERATION	DRAW	DATE	SCALE	FIT	PART NO.
A1	2023. 08. 19	Increase Y Keying	—	X.X    ±0.40	kevin-xin	2023.08.19	UNIT	mm	WD2500-2HXXX0XX(W)
A0	2023. 08. 02	Add the cable terminal material number	—	X.XX   ±0.25	CHECK	DATE	SIZE	A4	TITLE: 2.5X3.3mm Dyn. TYPE Dual Row Socket Housing
1	2022. 1. 20	NEW	—	X.XXX   ±0.15	APPROVE	DATE	SHEET	4/5	Customer NO.
				Angle   ± 3°			PROJ.	⊕	
				DIM    TOL					

**WCON**  
Http: www.wcon.com

WCON-Dongguan      WCON-Kunshan  
Tel: +86 769 85358920      Tel: +86 512 57468408  
Fax: +86 769 85358915      Fax: +86 512 57468468  
E-mail: sales@wcon.com      E-mail: salesks@wcon.com

# HSF



16PIN, Y-KEY

20PIN, Y-KEY

REV	DATE	MODIFICATION DESCRIPTION	CHANGE	OPERATION	DRAW	DATE	SCALE	FIT	PART NO.
A1	2023.08.19	Increase Y Keying	—	X.X ±0.40	kevin-xin	2023.08.19	UNIT	mm	WD2500-2HXXX0XX(W)
A0	2023.08.02	Add the cable terminal material number	—	X.XX ±0.25	CHECK	DATE	SIZE	A4	TITLE: 2.5X3.3mm Dyn. TYPE Dual Row Socket Housing
1	2022.1.20	NEW	—	X.XXX ±0.15	APPROVE	DATE	SHEET	5/5	Customer NO.
				Angle ± 3°			PROJ.	⌀ ↗	
				DIM TOL					

## WCON

Http: [www.wcon.com](http://www.wcon.com)

WCON-Dongguan Tel: +86 769 85358920 Fax: +86 769 85358915 E-mail: <a href="mailto:sales@wcon.com">sales@wcon.com</a>	WCON-Kunshan Tel: +86 512 57468408 Fax: +86 512 57468468 E-mail: <a href="mailto:salesks@wcon.com">salesks@wcon.com</a>
---	--